



3112 GOLDFINCH DRIVE
PATRIOT

SINGLE FAMILY HOME FOR SALE IN ROYSE CITY, TX

SALES CONTACT

214-571-7718

MATT@ROCKWELL-HOMES.COM

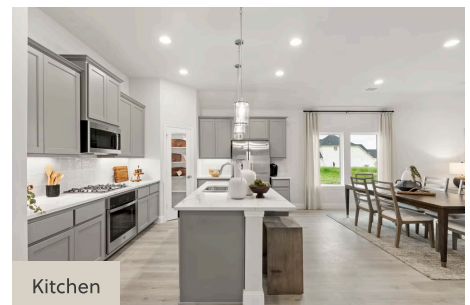
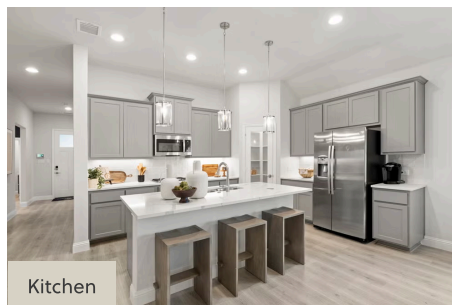
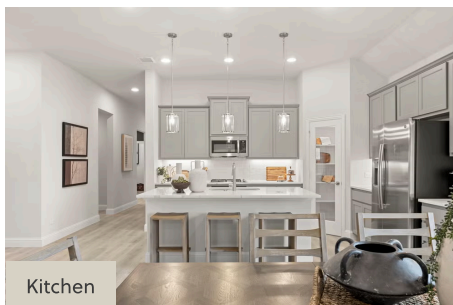


PRICED FROM
\$368,000

SQ 2,264 | BD 4 | 2 BA

About 3112 Goldfinch Drive

New single-story Patriot home plan by RockWell Homes, where thoughtful design meets modern convenience. This spacious home offers 4 bedrooms and 2.5 bathrooms, home office space, plus a 2-car garage, making it the perfect fit for growing families or those who need extra space. The exterior showcases a classic full brick façade, a welcoming covered porch, and energy-efficient dual-pane windows, covered patio, 8-foot front door, providing both curb appeal and cost-effective comfort. Step inside to find an open-concept layout that seamlessly connects the kitchen, living, and dining areas, all situated at the back of the home with dual pane energy efficient windows ...

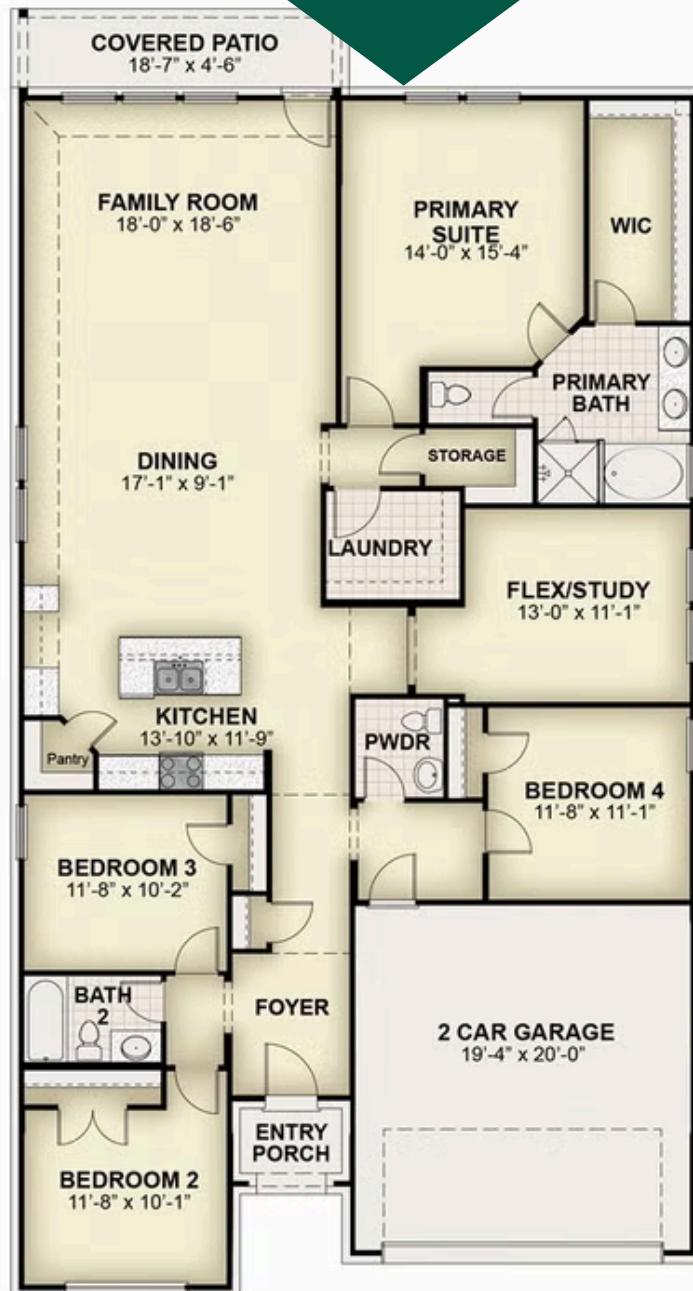




3112 GOLDFINCH DRIVE
PATRIOT

SINGLE FAMILY HOME FOR SALE IN ROYSE CITY, TX
SQ 2,264 | BD 4 | 2 BA

Floorplans



All prices, promotions, features, floor plans, elevations and dimensions are subject to change without notice.

