



2445 WHEATFIELD NOOK ROAD
RYDER

SINGLE FAMILY HOME FOR SALE IN ROYSE CITY, TX

SALES CONTACT

214-571-7718

MATT@ROCKWELL-HOMES.COM



PRICED FROM
\$426,000

SQ 2,837 | BD 5 | 3 BA

About 2445 Wheatfield Nook Road

5.25% Fixed Rate (5.302%APR)* New two-story home by RockWell Homes, a perfect combination of elegance and functionality. This spacious home offers 5 bedrooms and 3.5 bathrooms, providing the ideal layout for growing families and those who need extra space. The home includes a home office, a gameroom, and a 2-car garage for added convenience and flexibility. The exterior is highlighted by full brick, a welcoming covered porch, covered back yard patio and dual-pane energy-efficient windows, offering both style and comfort. The open-concept design places the living, kitchen, and dining areas at the heart of the ...



Kitchen



Kitchen

LIMITED TIME OFFER ON QUICK-CLOSE HOMES

5.25%* 30-YEAR FIXED RATE
APR 5.302% when you finance with
FBC Mortgage, LLC

MAXIMIZE YOUR PURCHASE POWER
WITH ROCKWELL HOMES & FBC MORTGAGE, LLC

First qualified applicants to be approved and rate locked by FBC Mortgage, LLC
receive a special low rate on Conventional Loans while supplies last.

Fixed Rate Promotion

TO GET STARTED!

EQUAL HOUSING
OPPORTUNITY





2445 WHEATFIELD NOOK ROAD
RYDER

SINGLE FAMILY HOME FOR SALE IN ROYSE CITY, TX
SQ 2,837 | BD 5 | 3 BA

Floorplans



All prices, promotions, features, floor plans, elevations and dimensions are subject to change without notice.

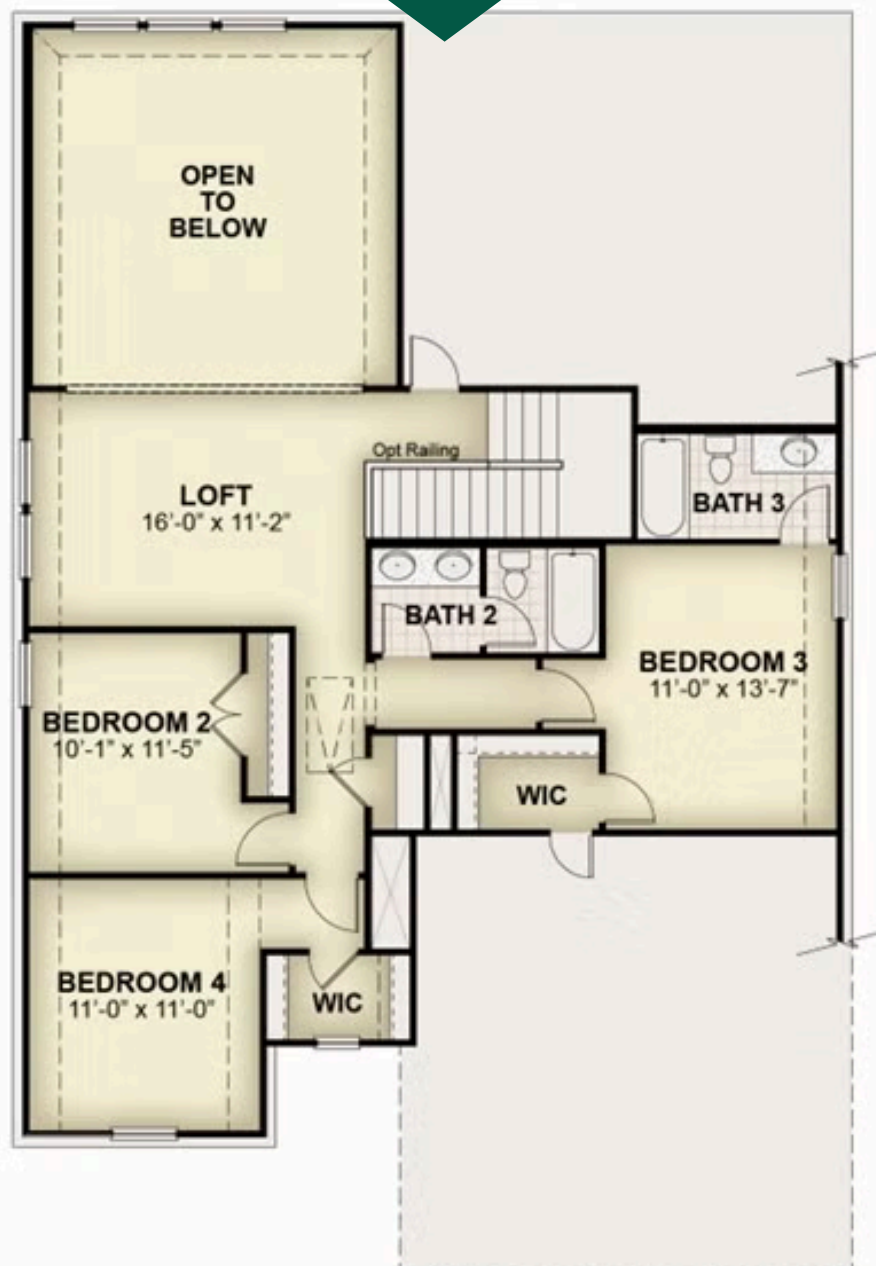




2445 WHEATFIELD NOOK ROAD
RYDER

SINGLE FAMILY HOME FOR SALE IN ROYSE CITY, TX
SQ 2,837 | BD 5 | 3 BA

Floorplans



All prices, promotions, features, floor plans, elevations and dimensions are subject to change without notice.

