



# 2328 LEIGHTON TOP ROAD PENNANT

SINGLE FAMILY HOME FOR SALE IN ROYSE CITY, TX  
SALES CONTACT  
214-571-7718  
MATT@ROCKWELL-HOMES.COM

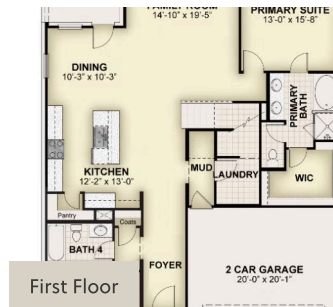


PRICED FROM  
**\$422,000**

SQ 2,581 | BD 5 | 3 BA

## About 2328 Leighton Top Road

New two-story home by RockWell Homes, designed to seamlessly blend contemporary style with functional living spaces. This thoughtfully crafted home offers 5 bedrooms and 3 bathrooms, providing ample room for growing families or those who enjoy extra space. The home also includes a 2-car garage, a striking full brick exterior, a covered patio, and dual-pane energy-efficient windows for optimal comfort and savings. The open-concept design places the living, kitchen, and dining areas at the back of the home for added privacy and flow. The kitchen is a chef's dream, featuring a spacious island with bar stool seating,



All prices, promotions, features, floor plans, elevations and dimensions are subject to change without notice.



2328 LEIGHTON TOP ROAD  
PENNANT