



2108 STRATFORD ROAD REMBRANDT - 60 FT HOME SITE

SINGLE FAMILY HOME FOR SALE IN **ROCKWALL, TX**

SALES CONTACT

214-833-9229

NELSONLAKE@ROCKWELL-HOMES.COM

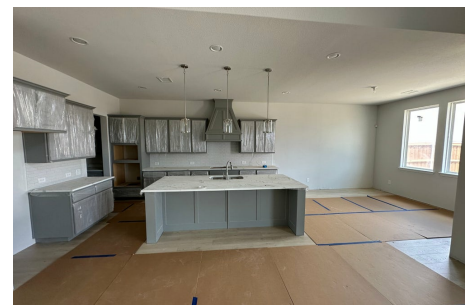


PRICED FROM
\$679,000

SQ 3,248 | BD 4 | 3 BA

About 2108 Stratford Road

New Rembrandt home design by RockWell homes with 4 bedrooms, 3.5 bathrooms, home office, gameroom and 3-car garage. Stunning exterior with ACME brick, metal accent roof, 8-foot front door, covered porch, wood garage doors and covered back yard patio. The foyer with soaring ceilings and open staircase opens to the home office and private guest suite on the first floor. Open concept living-kitchen area is the heart of this new home. The kitchen includes large center island, abundant solid surface countertop space, GE stainless steel appliances, gas cooktop, built in oven, built in microwave, dishwasher, 42-inch upgraded cabinets, upgraded flooring, undermount sink, butler's pantry cabinets, large walk-in pantry, Delta faucet, recessed can lighting and upgraded flooring. Living area features vaulted ceilings with 12ft glass sliding door overlooking the covered patio and back yard views. Private primary suite is perfectly placed ...





2108 STRATFORD ROAD REMBRANDT - 60 FT HOME SITE

SINGLE FAMILY HOME FOR SALE IN ROCKWALL, TX

SQ 3,248 | BD 4 | 3 BA

Floorplans



All prices, promotions, features, floor plans, elevations and dimensions are subject to change without notice.





2108 STRATFORD ROAD
REMBRANDT - 60 FT HOME SITE

SINGLE FAMILY HOME FOR SALE IN ROCKWALL, TX
SQ 3,248 | BD 4 | 3 BA

Floorplans

