



13528 AUTUMN HARVEST AVE
EDISON

TOWNHOUSE HOME FOR SALE IN WINTER GARDEN, FL

SALES CONTACT

407-214-3527

ABIGAIL@ROCKWELL-HOMES.COM

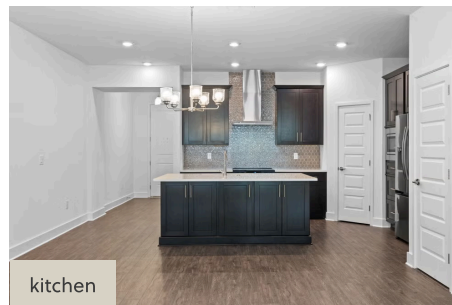


PRICED FROM
\$490,000

SQ 1,941 | BD 3 | 3 BA

About 13528 Autumn Harvest Ave

New Luxurious Townhome by RockWell Homes. New Edison townhome (lot 37) minutes to Walt Disney World Parks. This spacious home offers 3 bedrooms, 3 bathrooms, and a versatile loft, perfect for your lifestyle needs. The townhome also includes a 2-car garage, a covered front lanai, a private second-floor balcony, and a covered back yard lanai, providing abundant outdoor living space for relaxation and entertaining. The chef-inspired kitchen is a standout feature, complete with an island, solid surface countertops, and high-end stainless-steel appliances, including a cooktop, oven, microwave, and dishwasher. Enjoy the upgraded 42-inch cabinets, ceramic tile backsplash, undermount sink, and Delta faucets, along with a walk-in pantry for added storage. The open dining area and modern lighting package complement the sleek design, offering a perfect space for family meals and gatherings. The spacious living ...

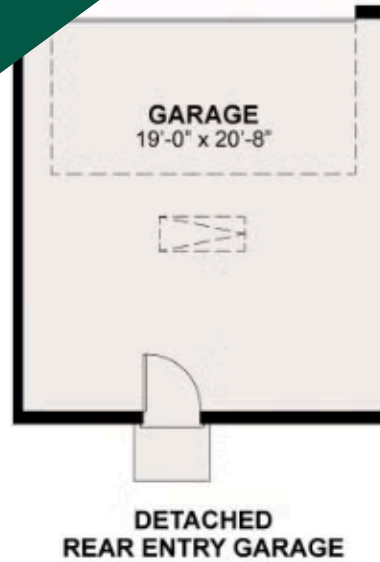




13528 AUTUMN HARVEST AVE
EDISON

TOWNHOUSE HOME FOR SALE IN WINTER GARDEN, FL
SQ 1,941 | BD 3 | 3 BA

Floorplans



All prices, promotions, features, floor plans, elevations and dimensions are subject to change without notice.

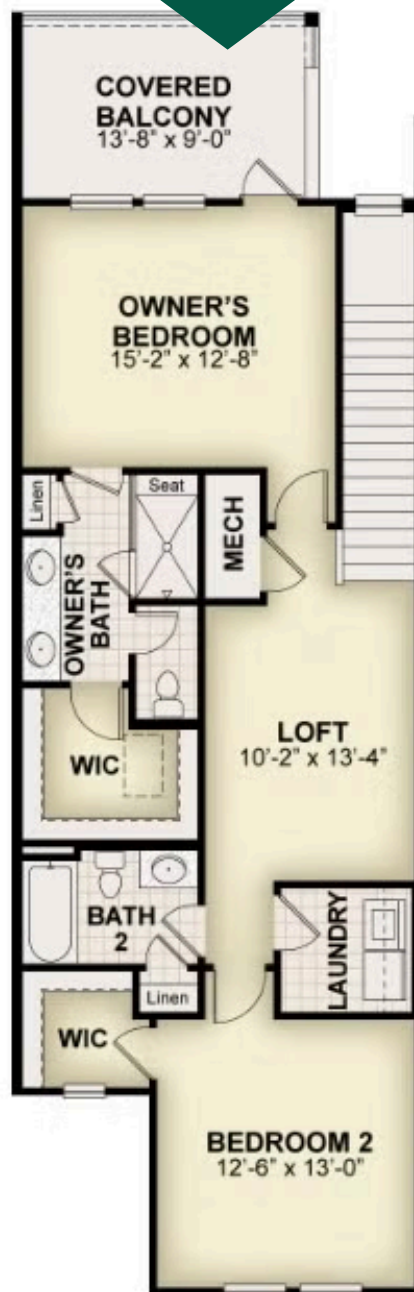




13528 AUTUMN HARVEST AVE
EDISON

TOWNHOUSE HOME FOR SALE IN WINTER GARDEN, FL
SQ 1,941 | BD 3 | 3 BA

Floorplans



All prices, promotions, features, floor plans, elevations and dimensions are subject to change without notice.

